

_ Sunday +
Girl's Name

"Colorful" singer Jack +
African mammal

Massive +
Dairy Product

A canonical ice cream flavor +
found in a White Russian, frequently

A high card +
In solitary confinement (slang, 3 wds)

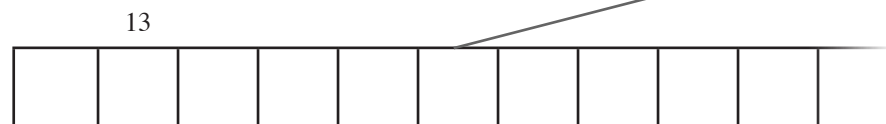
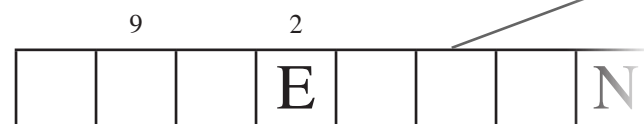
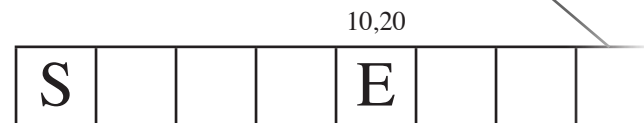
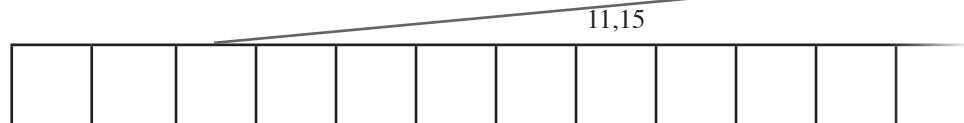
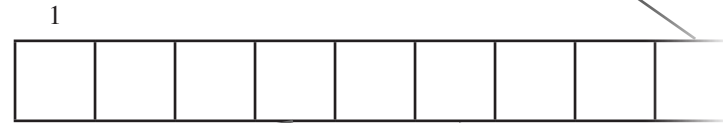
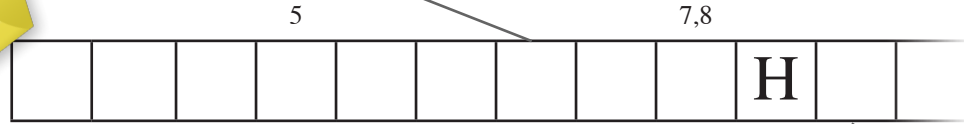
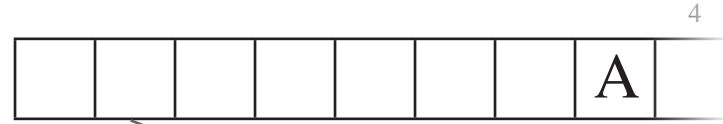
Adder, maybe +
Motor _

Primary LCD color +
Nighttime source of light

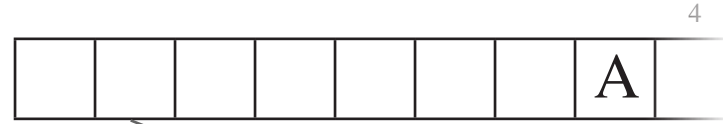
Opposite of short +
Narrative

Relative of avenue and lane +
Battler

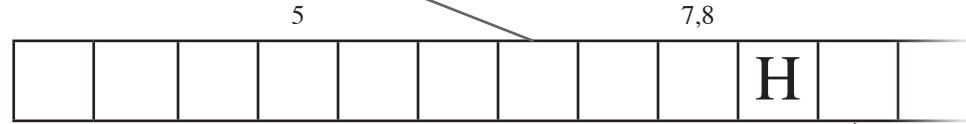
*I'm THIS close to
reverse engineering the
decryption mechanism
on the box. I've printed
out this chip schematic
... I wish my printer
weren't running out of
toner...*



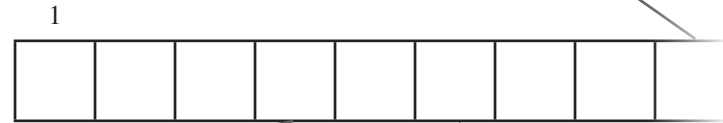
_ Sunday +
Girl's Name



"Colorful" singer Jack +
African mammal



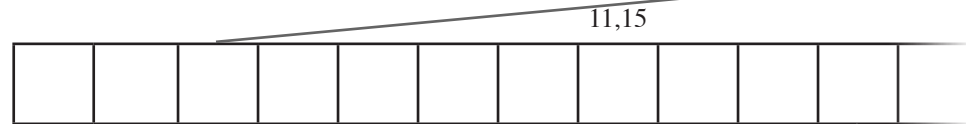
Massive +
Dairy Product



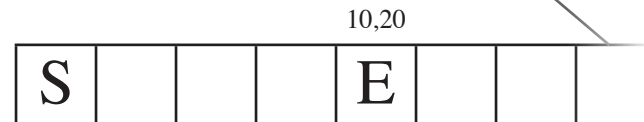
A canonical ice cream flavor +
found in a White Russian, frequently



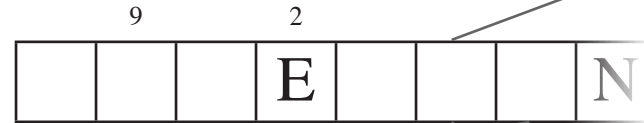
A high card +
In solitary confinement (slang, 3 wds)



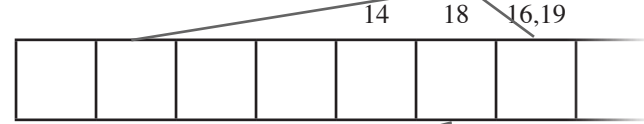
Adder, maybe +
Motor _



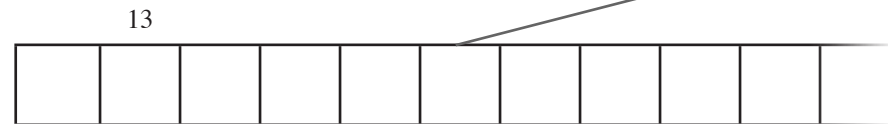
Primary LCD color +
Nighttime source of light



Opposite of short +
Narrative



Relative of avenue and lane +
Battler



*Still working on that
decryption mechanism...
I've printed out this
other chip schematic...
when's that toner going
to get here?*



S



S



I



R



O



A



W



N



B



H



S



D



E



O



I



G



T



M



T



H